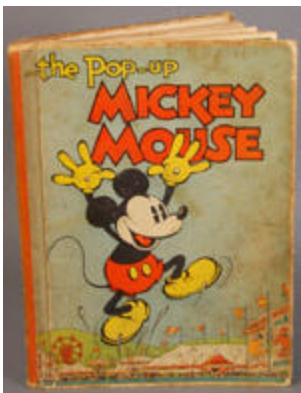


## Lots 301 - 310



**Lot #301: MICKEY MOUSE WATCH**

**Description:** By Ingersoll  
From the Estate of Frederick W. Hughes  
Estimate: \$600 - \$800



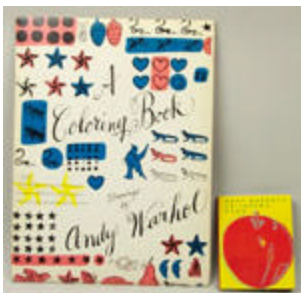
**Lot #302: WALT DISNEY STUDIOS**

**Description:** The Pop-Up Mickey Mouse  
published by Blue Ribbon Books Inc.,  
New York, pop-up double pages. 8 3/4  
inches x 6 1/2 inches  
From the Estate of Frederick W. Hughes  
Estimate: \$200 - \$400



**Lot #303: GERMAN LITHOGRAPHIC TIN  
CLIP TOY**

**Description:** Marked "D.R.G.M.  
Germany", in the form of a girl sitting on  
a chamber pot from which emerges a  
mouse, nipping at the girls buttocks. 5  
inches tall  
From The Estate of Frederick W. Hughes  
Estimate: \$125 - \$175



**Lot #304: ANDY WARHOLS CHILDRENS  
BOOK**

**Description:** "A Coloring Book Drawings  
By Andy Warhol" The first, copyright  
1983 by Bruno Bischofsberger, the  
second, a first edition Callaway Book  
published by Simon and Schuster, with  
printed sleeve envelope.  
From The Estate of Frederick W. Hughes  
Estimate: \$100 - \$150



**Lot #305: COMPOSITION AND WOOD  
MARIONETTE OF A BLACK-MAN**

**Description:** With cotton shirt and striped trousers, cardboard box; approx. 11 1/4 inches high  
From the Estate of Frederick W. Hughes  
Estimate: \$50 - \$75



**Lot #306: GROUP OF FOUR PAINTED  
CANVAS AND VELVET DWARVES AFTER  
DISNEY DESIGNS**

**Description:** Including Sneezy and Doc, with painted faces and velvet belted tunics, leggings and feet. approx. 11 1/4 inches high  
From the Estate of Frederick W. Hughes  
Estimate: \$100 - \$200



**Lot #307: TWO WOOD CART MODELS**

**Description:** Comprising a barrel cart with two orange buckets pulled by a clothbound figure, and a horse-drawn cart with two cloth bound figures. Lengths: 10 1/4 inches and 16 1/2 inches  
From the Estate of Frederick W. Hughes  
Estimate: \$125 - \$175



**Lot #308: GROUP OF BLACK DOLLS AND  
COLLECTIBLE FIGURES**

**Description:** Comprising a 19 inch cloth boy doll and a 15 1/4 inch girl doll; a 16 inch girl "bottle" doll; a 10 1/4 inch girl figure with fiber wrapped arms and bead necklaces; a blue-painted cast iron 7 1/2 inch policeman bank; and nine 4 inch wood headed "walking" dolls with funnel shape cloth covered skirts.  
From the Estate of Frederick W. Hughes  
Estimate: \$200 - \$300



**Lot #309: PAINT DECORATED DOLL'S  
CRADLE**

**Description:** The domed ends supported by shaped sides raised on rockers. 12 inches high x 22 1/2 inches wide x 8 1/2 inches deep  
Estimate: \$100 - \$200



**Lot #310: ARTICULATED FIGURE OF A BLACK DANCER**

**Description:** On double paddle base with a wind-up figure of a girl dancer, in a box; the larger 9 1/4 inches high x 10 1/4 inches wide

From the Estate of Frederick W. Hughes  
Estimate: \$75 - \$125

---

[To Top](#)



## Lots 311 - 320

**No Photo Available**

**Lot #311: THIS ITEM IS INTENTIONALLY BLANK**

**Description:**  
Estimate:



**Lot #312: BLACK MUSICIAN DOLL**

**Description:** Composition-head, cloth-covered musician. 12 inches tall  
From the Estate of Frederick W. Hughes  
Estimate: \$60 - \$80



**Lot #313: GROUP OF THREE FABRIC-CLOTHED POTTERY SINGLE-STRING MARIONETTES FIGURES**

**Description:** Marionettes  
From the Estate of Frederick W. Hughes  
Estimate: \$25 - \$35



**Lot #314: CLOTH-COVERED BEAR.**

**Description:** 14 1/2 inches tall, with swing head, arms and legs; together with "The Little King" pull string toy, with box, by Jayonar and copyright 1939, Parker Brothers "United States Puzzle Map", and an uncut sheet of Napoli playing cards. Length of bear 14 1/4 inches  
From The Estate of Frederick W. Hughes  
Estimate: \$40 - \$60



**Lot #315: VICTORIAN ROOTWOOD RUSTIC ARMCHAIR**

**Description:** Naturally rustic and organic back on a root form seat and root form legs  
42 inches high x 16 inches wide x 18 inches deep  
Estimate: \$800 - \$1200



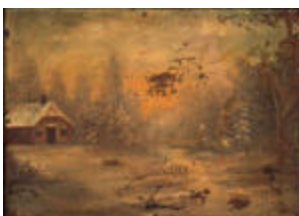
**Lot #316: HAND COLORED DRAWING OF A FAMILY**

**Description:** On paper, laid down on artist's board, 13 inches high x 15 1/2 inches wide, unsigned  
Estimate: \$100 - \$200



**Lot #317: TWO 20TH C. GOUACHE INTERIORS**

**Description:** 12 5/8 inches X 18 3/4 inches (each sheet)  
From the Estate of Frederick W. Hughes  
Estimate: \$50 - \$75



**Lot #318: WINTER SCENE WITH COTTAGE**

**Description:** Oil on tin, framed under glass.  
9 3/4 inches x 13 3/4 inches (sight)  
From the Estate of Frederick W. Hughes  
Estimate: \$75 - \$125



**Lot #319: PINCHIN JOHNSON SUPER-FINISHES COLOR SCHEME DISPLAYER**

**Description:** The stained wood carry case containing a mahogany and a lacquer frame. With magnetic-back room interiors and furniture and color samples. From the Estate of Frederick W. Hughes  
Estimate: \$150 - \$200



**Lot #320: "WARREN PAINTS"**

**Description:** Advertising sign for paint samples consisting of color combination suggestions; mixed media. 34 inches x 28 inches (framed)  
From the Estate of Frederick W. Hughes  
Estimate: \$100 - \$200

---

[To Top](#)



## Lots 321 - 330



**Lot #321: DIORAMA BOX OF TIGER HUNT IN INDIA**

**Description:** Showing a prince carried on an elephant battling a lion, downed



**Lot #322: AN AMERICAN WOODEN GRAIN SHOVEL, POSSIBLY SHAKER**

**Description:** With a u-shaped handle, pole stem and deep bowl. 36 1/2 inches long  
From the Estate of Frederick W. Hughes  
Estimate: \$150 - \$200



**Lot #323: FOLK ART GROUP OF GAME BIRD WITH TWO CHICKS**

**Description:** Wood with traces of apple green and cream paint. 11 inches high x 21 1/4 inches long  
From the Estate of Frederick W. Hughes  
Estimate: \$600 - \$800





**Lot #323: FOLK ART GROUP OF GAME BIRD WITH TWO CHICKS**

**Description:** Wood with traces of apple green and cream paint.  
11 inches high x 21 1/4 inches long  
From the Estate of Frederick W. Hughes  
Estimate: \$600 - \$800



**Lot #324: FOLK ART MODEL OF A LOG CABIN ON PLATFORM**

**Description:** The canted roof with central chimney above two levels of four-part windows, porch entrance.  
Provenance: Margot Johnson, Inc., New York  
19 inches high x 12 inches wide x 15 inches deep  
From the Estate of Frederick W. Hughes  
Estimate: \$300 - \$500



**Lot #325: CARVED WALNUT FRAME**

**Description:** The opening within architectural stonework surround carved with a palm tree and other plants. 12 1/2 inches x 8 3/4 inches  
From the Estate of Frederick W. Hughes  
Estimate: \$80 - \$120



**Lot #326: THREE TURNED WOOD BOWLS**

**Description:** One impressed "Murusing 2 nd"  
Diameters 16 inches, 11 inches and 8 1/4 inches  
Estimate: \$200 - \$300



**Lot #327: SET OF FOUR DECOUPAGE PANELS**

**Description:** Various applied with French and Italian book engravings, hand written letters and envelopes, on a wash painted faux bois ground, framed. 30 inches x 21 3/4 inches (framed)  
Estimate: \$700 - \$900



**Lot #328: PROFILE OF A YOUNG MAN**

**Description:** Oil on wooden panel in a wooden frame. 9 1/16 inches x 6 15/16 inches (panel)

From the Estate of Frederick W. Hughes  
Estimate: \$125 - \$175



**Lot #329: WATERCOLOR MINIATURE OVAL PORTRAIT ON IVORY OF A BABY**

**Description:** The 1/2 length figure wearing a coral necklace and a gown with blue bows, velvet mat and giltwood frame.

Framed 7 1/2 inches x 6 1/2 inches

From the Estate of Frederick W. Hughes  
Estimate: \$100 - \$150



**Lot #330: ENGLISH CARVED OVAL CAMEO PROFILE BUST PORTRAIT OF GENTLEMAN**

**Description:** The circular inlaid fruitwood frame with the 1808 trade label of Cardinal Howard affixed to the back. Framed 5 1/2 inches

From the Estate of Frederick W. Hughes  
Estimate: \$100 - \$150

---

[To Top](#)



**Lots 341 - 350**

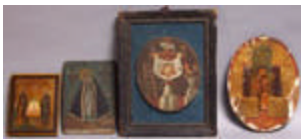
Estimate: \$150 - \$200

**Lot #342: THREE LATIN AMERICAN  
OVAL RELIQUARIES IN TIN SHADOW  
BOXES**



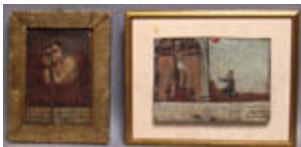
**Description:** One in the form of an altar with portrait of the Madonna and Child, the others arranged as flower heads; together with a silk flower and wax work monogram in octagonal shadow box. The largest 7 x 5 1/2 inches  
From The Estate of Frederick W. Hughes  
Estimate: \$100 - \$150

**Lot #343: GROUP OF FOUR SMALL  
PANEL PAINTINGS**

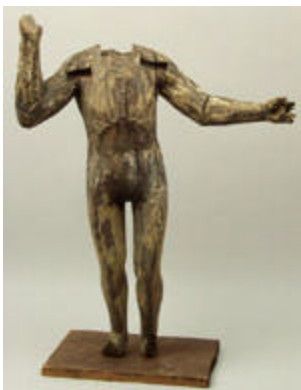


**Description:** Comprising: a 6 inch x 5 1/4 inch oval scene of the Veil of Veronica draped on the cross, ebonized frame: 6 inch x 4 3/8 inch image of Our Lady of Guadalupe; a 5 1/4 inch x 4 1/4 inch icon of two saints flanking a three-domed church; and a 7 3/4 inch x 5 3/4 inch oval icon with a view of a church altar, on gold ground.  
From the Estate of Frederick W. Hughes  
Estimate: \$150 - \$250

**Lot #344: TWO SPANISH COLONIAL  
PAINTINGS ON TIN**



**Description:** The one 7 1/4 inches x 10 inches, showing a kneeling pilgrim at a shrine with a crucifixion, above an enscription; the second 8 3/4 inches x 6 inches of a martyr amidst flames  
From the Estate of Frederick W. Hughes  
Estimate: \$125 - \$175



**Lot #345: SPANISH COLONIAL CARVED  
WOOD MALE FRAGMENTARY FIGURE**

**Description:** With upraised arms, traces of paint decoration, lacking head, fingertips and feet.  
27 inches high x 20 inches wide  
From the Estate of Frederick W. Hughes  
Estimate: \$250 - \$350





**Lot #346:** A REGENCY SILKWORK  
PICTURE

**Description:** Depicting Christ in the woods with figures. 19 1/2 inches x 22 1/2 inches  
Estimate: \$200 - \$400



**Lot #347:** THREE EMBROIDERED SILK  
FRAGMENT PANELS

**Description:** Probably Italian, each with floral patterns in gold or silver thread borders; together with embroidered and needlework fragments.  
The largest: 15 1/2 inches x 20 inches  
Estimate: \$150 - \$200



**Lot #348:** TWO VINTAGE CHRISTMAS  
ORNAMENTS

**Description:** One in the form of a baby in glass bassinet, the other a papier mache' and crepe paper clown. Lengths: 4 and 8 inches  
From the Estate of Frederick W. Hughes  
Estimate: \$40 - \$60



**Lot #349:** LARGE GROUP OF ASSORTED  
CHRISTMAS ORNAMENTS

**Description:** Christmas Ornaments  
Estimate: 40.00 - 60.00



**Lot #350:** GROUP OF EIGHT GLASS  
CHRISTMAS ORNAMENTS

**Description:** Comprising two Indian heads, two golf heads, one leaf form with baby, one strawberry and two others. lengths: 2 to 4 inches  
From the Estate of Frederick W. Hughes  
Estimate: \$30 - \$50

---

[To Top](#)



**Lots 341 - 350**

**Lot #341: TWO LATIN AMERICAN  
RELIGIOUS PICTURES**



**Description:** Comprising: an 11 1/2 inch x 8 5/8 inch oil on canvas "The Veil of Veronica" and an oil on tin showing St. Martin; together with a paper crucifix contained in a foliate-carved walnut and parcel-gilt frame.

From the Estate of Frederick W. Hughes  
Estimate: \$150 - \$200

**Lot #342: THREE LATIN AMERICAN  
OVAL RELIQUARIES IN TIN SHADOW  
BOXES**



**Description:** One in the form of an altar with portrait of the Madonna and Child, the others arranged as flower heads; together with a silk flower and wax work monogram in octagonal shadow box. The largest 7 x 5 1/2 inches

From The Estate of Frederick W. Hughes  
Estimate: \$100 - \$150

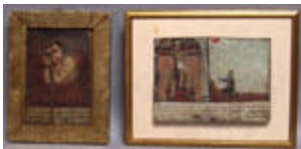
**Lot #343: GROUP OF FOUR SMALL  
PANEL PAINTINGS**



**Description:** Comprising: a 6 inch x 5 1/4 inch oval scene of the Veil of Veronica draped on the cross, ebonized frame: 6 inch x 4 3/8 inch image of Our Lady of Guadalupe; a 5 1/4 inch x 4 1/4 inch icon of two saints flanking a three-domed church; and a 7 3/4 inch x 5 3/4 inch oval icon with a view of a church altar, on gold ground.

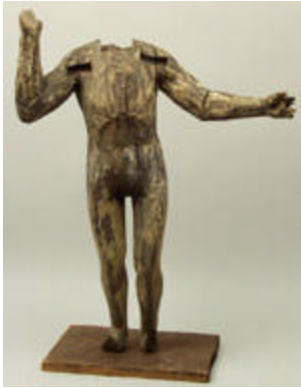
From the Estate of Frederick W. Hughes  
Estimate: \$150 - \$250

**Lot #344: TWO SPANISH COLONIAL  
PAINTINGS ON TIN**



**Description:** The one 7 1/4 inches x 10 inches, showing a kneeling pilgrim at a shrine with a crucifixion, above an enscription; the second 8 3/4 inches x 6 inches of a martyr amidst flames

From the Estate of Frederick W. Hughes  
Estimate: \$125 - \$175



**Lot #345: SPANISH COLONIAL CARVED WOOD MALE FRAGMENTARY FIGURE**

**Description:** With upraised arms, traces of paint decoration, lacking head, fingertips and feet.

27 inches high x 20 inches wide

From the Estate of Frederick W. Hughes

Estimate: \$250 - \$350



### Lot #346: A REGENCY SILKWORK PICTURE

**Description:** Depicting Christ in the woods with figures. 19 1/2 inches x 22 1/2 inches

Estimate: \$200 - \$400



**Lot #347:** THREE EMBROIDERED SILK  
FRAGMENT PANELS

**Description:** Probably Italian, each with floral patterns in gold or silver thread borders; together with embroidered and needlework fragments.

The largest: 15 1/2 inches x 20 inches

Estimate: \$150 - \$200



## Lot #348: TWO VINTAGE CHRISTMAS ORNAMENTS

**Description:** One in the form of a baby in glass bassinet, the other a papier mache' and crepe paper clown. Lengths: 4 and 8 inches

From the Estate of Frederick W. Hughes

Estimate: \$40 - \$60



**Lot #349: LARGE GROUP OF ASSORTED CHRISTMAS ORNAMENTS**

**Description:** Christmas Ornaments

Estimate: 40.00 - 60.00



**Lot #350: GROUP OF EIGHT GLASS CHRISTMAS ORNAMENTS**

**Description:** Comprising two Indian heads, two golf heads, one leaf form with baby, one strawberry and two others. lengths: 2 to 4 inches  
From the Estate of Frederick W. Hughes  
Estimate: \$30 - \$50

---

**To Top**



## Lots 351 - 360



**Lot #351: THREE MERCURY GLASS GRAPE BUNCH CHRISTMAS ORNAMENTS**

**Description:** In mirror, green and cobalt blue with gilt-metal caps. 4 1/4 inches long  
From the Estate of Frederick W. Hughes  
Estimate: \$75 - \$125



**Lot #352: A SMALL CHIPPENDALE MAHOGANY LOOKING GLASS.**

**Description:** The rectangular plate surmounted by a pierced border. 20 1/2 inches high x 13 inches wide  
Estimate: \$200 - \$400



**Lot #353: ROCOCO STYLE CARVED EBONIZED AND PARCEL-GILT MIRROR**

**Description:** The shaped oblong plate within pierced frame carved with floral rondels and leaf scrolls. 31 1/2 inches x 4 feet 3 1/2 inches  
Estimate: \$100 - \$200



**Lot #354: REGENCY GILTWOOD OVAL SMALL MIRROR**

**Description:** With bulls eye band and molded frame. 12 1/2 inches x 10 1/4 inches  
From the Estate of Frederick W. Hughes  
Estimate: \$200 - \$300



**Lot #354:** REGENCY GILTWOOD OVAL SMALL MIRROR

**Description:** With bulls eye band and molded frame. 12 1/2 inches x 10 1/4 inches

From the Estate of Frederick W. Hughes

Estimate: \$200 - \$300



**Lot #355:** VICTORIAN MAHOGANY DRESSING TABLE MIRROR

**Description:** With arched swing plate, S-formed uprights and serpentine-fronted base.

21 1/2 inches high x 18 1/4 inches wide

Estimate: \$100 - \$150



**Lot #356:** CARVED WALNUT AND PARCEL GILT MIRROR

**Description:** With faux bois frame; together with a pair of 24 1/2 inch x 21 1/2 inch frames with grained wood and ebonized bands and a 13 1/2 inch x 11 inch oval velvet lined five part picture frame. 24 inches x 21 inches (mirror)

Estimate: \$80 - \$125



**Lot #357:** CAST IRON SEVEN PINT KETTLE WITH BRASS HANDLE

**Description:** Impressed "Falkirk" and "No. 1", with swan's neck spout, flattened bell-form cover and arched handle. 11 inches high

From the Estate of Frederick W. Hughes

Estimate: \$100 - \$150





**Lot #358:** EMPIRE STYLE BRASS-MOUNTED BRONZE URN

**Description:** The ovoid bowl with outset spigot and sphinx-backed loose ring handles, square base and ball feet, lacking cover. 18 3/4 inches high  
Estimate: \$200 - \$300



**Lot #359:** SET OF SIX QUEEN ANNE WALNUT DINING CHAIRS

**Description:** Each with an upholstered back and seat, above a rail with oval medallion on angular cabriole legs.  
Estimate: \$3000 - \$4000



**Lot #360:** WALNUT CARVED CORNER ARMCHAIR

**Description:** the tub shaped back supported by turned columns and vase shaped supports on a shaped seat with shell carved cabriole front leg joined by a turned stretcher  
Estimate: \$2000 - \$3000

---

[To Top](#)



**Lots 361 - 370**



**Lot #361: AN EARLY VICTORIAN  
MAHOGANY CENTER TABLE**

**Description:** The circular top above a turned standard supported by three carved and sloped feet. 28 1/2 inches high x 45 inches wide  
Estimate: \$800 - \$1200



**Lot #362: LOUIS XVI STYLE SETTEE**

**Description:** The arched back above an upholstered seat, raised on turned and fluted legs.  
38 inches high x 73 inches wide x 31 inches deep  
Estimate: \$1200 - \$1400



**Lot #363: BIEDERMEIER FIGURED ASH  
TRIPOD TABLE**

**Description:** The circular tilting top on column pedestal and tripod snake legs.  
29 inches high x 33 1/2 inches diameter  
Estimate: \$1800 - \$2200



**Lot #364: VICTORIAN MAHOGANY  
SEWING TABLE**

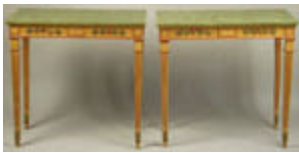
**Description:** The rectangular top above a fitted drawer, the trestles with s-form brackets, scroll feet. 29 inches high x 22 3/8 inches wide x 19 inches deep  
Estimate: \$200 - \$250



**Lot #365:** VICTORIAN STAINED WOOD  
FOUR-TIER WHATNOT

**Description:** The rectangular shelves on bobbin-turned supports; 47 inches x 16 inches

Estimate: \$300 - \$500



**Lot #366:** PAIR OF ITALIAN  
NEOCLASSICAL CARVED & PAINTED  
GILTWOOD CONSOLE TABLES

**Description:** The rectangular faux marble top above a frieze with carved foliate ornament raised on fluted square tapering legs. 34 inches high x 34 1/2 inches wide x 17 inches deep

Estimate: \$2500 - \$3500



**Lot #367:** REGENCY MAPLE DROP-LEAF  
WORK TABLE

**Description:** The drop leaf top fitted with a single drawer with a trestle form base. 28 1/2 inches high x 33 inches wide x 20 inches deep

Estimate: \$1000 - \$1500



**Lot #368:** PAIR OF FRENCH LEATHER  
UPHOLSTERED BENCHES

**Description:** The leather upholstered seat supported by turned legs and stretchers.

19 inches high x 17 inches wide

Estimate: \$600 - \$800



**Lot #369:** LOUIS XV CARVED  
BEECHWOOD LIT D' ALCOVE

**Description:** The carved head and footboard upholstered with blue velvet raised on an upholstered and cushioned seat raised on

upholstered and cushioned seat raised on  
carved cabriole legs  
36 inches high x 77 inches wide x 32  
inches deep  
Estimate: \$3000 - \$5000



**Lot #370: CAST IRON UMBRELLA STAND**

**Description:** The cast iron back cast  
with a duck and foliage, supported by a  
cast base  
26 inches high x 17 inches wide x 8  
inches deep  
Estimate: \$200 - \$400

---

[To Top](#)



## Lots 371 - 380



**Lot #371: GERMAN CARVED AND  
STAINED PINEWOOD HANGING CORNER  
SHELF**

**Description:** Centered by the head of a  
mountain goat flanked by fruit-laden  
branches. 12 inches high x 13 1/2 inches  
wide x 8 1/4 inches deep  
Estimate: \$300 - \$500



**Lot #372: PAIR OF ITALIAN  
NEOCLASSICAL MARQUETRY - INLAID  
SIDE CHAIRS**

**Description:** Each curved top rail with  
urn, griffens and vinework above solid  
vinework-inlaid splat; the d-shape seats  
with dot inlay and raised on sabre legs.  
Estimate: \$600 - \$800



**Lot #373: SMALL GEORGE III INLAID  
MAHOGANY WRITING TABLE**



**Lot #373: SMALL GEORGE III INLAID MAHOGANY WRITING TABLE**

**Description:** the rectangular mahogany cross-banded top above a frieze fitted with a drawer raised on square tapering legs joined by a stretcher  
28 inches high x 24 inches wide x 17 inches deep

Estimate: \$800 - \$1200



**Lot #374: PAIR OF SPANISH BAROQUE STYLE WALNUT SIDE CHAIRS**

**Description:** Each with brass nail-head stamped leather back and seat, on spiral-twist and block legs, with loose maroon velvet cushions.

Estimate: \$300 - \$500



**Lot #375: ITALIAN BAROQUE STYLE STRIPPED WOOD OPEN ARMCHAIR**

**Description:** With shaped horizontal stretcher, slatted seat and block legs.

Estimate: \$150 - \$200





**Lot #376:** LOUIS XVI STRIPPED  
BEECHWOOD SIDE CHAIR

**Description:** The top rail above an urn  
splat, the circular needlework seat raised  
on leaf-tiered fluted legs.  
Estimate: \$300 - \$500



**Lot #377:** TWO-TIER PAINTED AND  
PARCEL-GILT SIDE TABLE

**Description:** The square top supported  
by turned legs joined by a platform  
stretcher  
29 inches high x 14 inches wide  
Estimate: \$400 - \$500



**Lot #378:** FEDERAL STAINED  
CHERRYWOOD BEDSIDE TABLE

**Description:** The rectangular top above  
a frieze drawer, on square, tapering legs.  
17 inches high x 16 3/4 inches wide x 16  
3/4 inches deep  
Estimate: \$200 - \$400



**Lot #379:** REGENCY STYLE MAHOGANY CIRCULAR-TOP DINING TABLE.

**Description:** The molded top raised on four column-form supports joined by a ring stretcher and raised on splayed legs ending in brass cup castors.

Dimensions: 31 inches high x 5 feet 6 inches deep

Estimate: \$1000 - \$1500



**Lot #380:** LOUIS XV STYLE GILT-METAL MOUNTED PAINTED LOW TABLE

**Description:** Of oblong serpentine outline, painted with gilt vine work simulating brass inlay, the frieze drawer with mask head mount and raised on cabriole legs with female head mounts. 19 inches high x 39 inches wide x 25 inches deep

Estimate: \$150 - \$250

---

**To Top**



## Lots 381 - 390



**Lot #381:** REGENCY STYLE MAHOGANY TABLE

**Description:** With label of Philip Strobel & Sons, the circular top on concave-sided triangular pedestal and base.

25 1/4 inches high x 16 inches diameter

Estimate: \$300 - \$500



**Lot #382:** BAROQUE STYLE CARVED WALNUT SIDE CHAIR

**Description:** With eagle head and crown cresting above nailed leatherette panel enclosed by feathers, the seat on molded legs ending in pseudo lion's paw feet.

Estimate: \$200 - \$300

---

**Lot #383:** ITALIAN BAROQUE CARVED



**Lot #383: ITALIAN BAROQUE CARVED WALNUT SIDE CHAIR**

**Description:** The top rail carved with fleur de lys and s-scrolls, the plank seat on block legs joined by carved rails, traces of gilding; together with another carved walnut side chair, the back pierced with heart-shape opening beneath a cherub head, the plank seat on flared legs.

Estimate: \$300 - \$500



**Lot #384: FOUR TURNED WOOD LADDERBACK SIDE CHAIRS WITH RUSH SEATS**

**Description:** Chairs

Estimate: 200.00 - 400.00



**Lot #385: SHAKER STAINED WOOD LADDER BACK CHAIR**

**Description:** Impressed #6 on top rail, with arched splats, acorn finials and woven seat.

Estimate: 300.00 - 500.00



**Lot #386: ITALIAN ROCOCO STYLE PAINTED CONSOLE TABLE**

**Description:** The serpentine-fronted faux marble top above a drawer and the double scroll pedestal on tripod cabriole legs.

31 inches x 23 1/2 inches x 14 1/2 inches

Estimate: \$700 - \$900



**Lot #387: PAIR OF NEAR EASTERN BRASS SMOKING TABLES**

**Description:** Each circular tray top on bobbin stem and lobed base.

20 1/2 inches high x 13 1/4 inches diameter

Estimate: \$300 - \$400



**Lot #388: INDIAN WROUGHT IRON-MOUNTED WOOD LOW TABLE**

**Description:** The rectangular top above a frieze carved with rosettes and foliate bands, raised on turned legs. 20 1/2 inches x 4 feet 7 inches wide x 32 1/2 inches deep

Estimate: \$300 - \$500



**Lot #389: ROCOCO STYLE CIRCULAR MIRROR-TOP GILT-METAL OCCASSIONAL TABLE**

**Description:** The smoked top with gilt floral bank, the base cast with three seated putti supporting urns and resting on scroll feet.

25 inches high x 24 inches diameter

Estimate: \$600 - \$800



**Lot #390: AMERICAN PINE TOP RED PAINTED BIN TABLE**

**Description:** The rectangular top with removable slatted panel, raised on round tapered legs

23 3/4 inches high x 24 3/4 inches wide x 16 1/2

inches deep

Estimate: \$200 - \$400

---

[To Top](#)



## Lots 391 - 400



**Lot #391: RENAISSANCE STYLE INCISED AND CARVED WALNUT TWO-TIER TABLE**

**Description:** The graduated tiers incised with floral rondels, raised on dragon-head



**Lot #392: AN EARLY 20TH CENTURY LEATHER UPHOLSTERED SOFA**

**Description:** Button upholstered in light mustard color leather and trimmed in brass tacks.

29 inches high x 85 inches long x 36



**Lot #393: PAIR OF FRENCH ART DECO MAHOGANY SIDE CHAIRS**

**Description:** With curved upholstered backs and seats, on angular splayed legs, upholstered in copper velvet, the loose cushions with fringe.



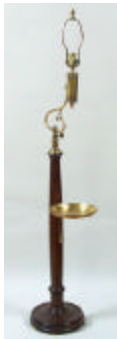
**Lot #393: PAIR OF FRENCH ART DECO  
MAHOGANY SIDE CHAIRS**

**Description:** With curved upholstered backs and seats, on angular splayed legs, upholstered in copper velvet, the loose cushions with fringe.  
Estimate: \$200 - \$400



**Lot #394: AESTHETIC MOVEMENT  
BRASS FLOOR LAMP**

**Description:** The pierced oil well with sunflower rondels, on bobbin-turned stem and four S-scroll legs. Height to top of well 4 feet 3 inches.  
Estimate: \$300 - \$500



**Lot #395: VICTORIAN MAHOGANY &  
BRASS FLOOR LAMP**

**Description:** 57 inches high  
Estimate: \$400 - \$600



**Lot #396: BAROQUE STYLE OAK  
REFECTORY TABLE**

**Description:** The rectangular overhanging top above plain rails and raised on vase-turned and block legs joined by box stretchers, now with two extension leaves. 29 3/4 inches x 8 feet 2 inches long x 42 1/2 inches wide; 11 feet 2 inches long with leaves.  
Estimate: \$800 - \$1200



**Lot #397: MAP DEPICTING VIRGINIA &  
THE CAROLINAS ENGRAVED AND HAND  
COLORED**

**Description:**  
Provenance: Lombard Antiquarian Maps & Prints  
From the Estate of Frederick W. Hughes  
Estimate: \$800 - \$1200





**Lot #398: PRIMITIVE RIVER SCAPE**

**Description:** signed lower left Hewis  
26 1/2 inches high x 36 1/2 inches wide  
Estimate: \$300 - \$400



**Lot #399: PRIMITIVE LANDSCAPE**

**Description:** with cottage in ornate  
frame  
Frame 26 1/2 inches high x 36 inches  
wide  
Estimate: \$100 - \$200



**Lot #400: A LANDSCAPE**

**Description:** Oil on canvas, signed  
lower right "AMN", unframed  
12 inches high x 9 1/4 inches wide  
Estimate: \$100 - \$200

---

**To Top**

