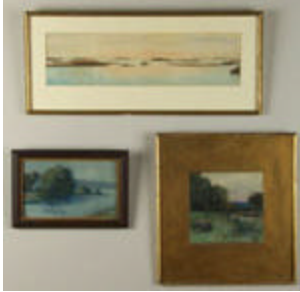


Lots 401 - 410



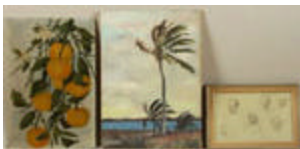
Lot #401: GROUP OF THREE FRAMED WATERCOLOR LANDSCAPES

Description: Comprising: "Coastal Islands, Maine", signed M.S. soule, sight 6 inches x 22 inches; "Lake view in Summer", signed Susie Mackay, 7 inches x 11 inches; "Meadow with Rock and Pond", signed Case Weller, sight 8 1/4 inches x 8 1/2 inches. Estimate: \$125 - \$175



Lot #402: "SHADOW VALLEY: MOUNTAIN LANDSCAPE"

Description: Oil on canvas board, signed Arthur Hoag, framed; together with "Tree on the Dunes", unsigned oil on board, framed. 20 inches x 16 inches and 14 inches x 11 inches. Estimate: \$150 - \$200



Lot #403: GROUP OF FOUR UNFRAMED OIL PAINTINGS

Description: Comprising: "Jockeys Up", 14 inches x 18 inches; "Grapefruit and Blossom", 18 1/2 inches x 12 1/2 inches; "Mountain Landscape", 13 3/4 inches x 19 3/4 inches; "Palm trees", 19 3/4 inches x 14 inches; together with a framed picture of head studies, framed engraving of a man spearing a beast, unframed print of a musical combo, signed Kelly and dated '69 and unframed engraved portrait of George Washington, after Gilbert Stuart. Estimate: \$100 - \$150



Lot #404: FIGURES IN A VILLAGE GARDEN

Description: Oil on canvas, unsigned, in gilt frame. 21 1/2 inches x 24 inches (of canvas). Estimate: \$100 - \$200



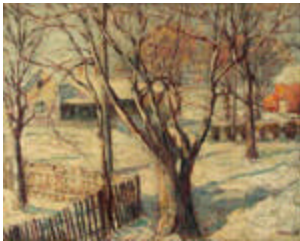
Lot #405: FIGURES STROLLING ON LANE

Description: Oil on canvas. Signed: C. Holm 16, unframed 22 1/4 inches x 25 1/4 inches
Estimate: \$200 - \$300



Lot #406: VIEW OF WOODS AND BARN

Description: Oil on Canvas, signed C. Holm, 14, lower right, unframed 18 1/2 inches x 17 1/2 inches
Estimate: \$100 - \$200



Lot #407: WINTER IN BACKYARD VIEW

Description: Oil on canvas, signed lower right: C. Holm 18, unframed. 23 inches x 29 1/4 inches
Estimate: \$150 - \$250



Lot #408: "SHIPS IN PORT"

Description: Oil on canvas, signed lower right: C. Holm 12. Unframed 26 inches x 25 inches
Estimate: \$100 - \$200



Lot #409: THREE BLACK AND WHITE PRINTS OF DISTINGUISHED MEN

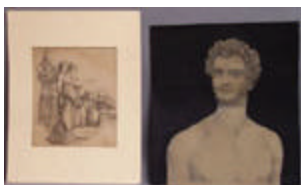
Description: "Admiral Saunders," "Charles the I," and "Monsieur Roy de Perse," all matted and framed under glass. Various sizes, the largest 22 inches x 20 inches (framed)
The Estate of Frederick W. Hughes
Estimate: \$125 - \$175



Lot #410: "LES JONGLEURS INDIANS"

Description: Colored engravings together with "Comme elles font toutes," a colored engraving matted and framed with a watercolor study for the plate with the artist's notes in pencil in the margins. 27 1/4 inches x 19 inches (framed)
From the Estate of Frederick W. Hughes
Estimate: \$300 - \$500

Lots 411 - 420



Lot #411: TWO GRAPHITE WORKS ON PAPER

Description: The first signed and dated "Vincent Cooper/1986" with gouache painted background on brown paper; the second portrays a group of women at a well. Provenance for the second piece: Jeannot R. Barr.
17 inches x 15 1/2 inches (the largest)
From the Estate of Frederick W. Hughes
Estimate: \$200 - \$300



Lot #412: FIGURES IN A GATEWAY

Description: An etching signed L.R. Martin Hardie
16 inches x 13 1/2 inches (of frame)
Estimate: \$50 - \$75



Lot #413: "MIDI SOUS BOIS"

Description: Wood engraving on Japan pelure signed "A. Lepere" and with the artist's chop; matted and framed under glass.
Provenance: Jeannot R. Barr
4 3/4 inches x 6 3/4 inches (sight)
From the Estate of Frederick W. Hughes
Estimate: \$150 - \$250



**Lot #414: "HILLSIDE VILLAGE" FRAMED REPRODUCTION
AFTER CEZANNE**

Description: In a Louis XV style giltwood frame with pierced and foliate carved corners, and leaf tip and egg-and-dart borders

Frame 31 inches x 25 inches

Estimate: \$250 - \$350



Lot #415: FRAMED REPRODUCTION AFTER MODIGLIANI

Description: "Seated woman with arm over chair"; the giltwood frame with egg-and-dart borders.

frame: 35 1/4 inches x 25 3/4 inches

Estimate: \$200 - \$400



Lot #416: CHROMOLITHOGRAPH

Description: After B. Champney depicting landscape with haystacks, stream and mountains, by Prang & Co. Boston

Estimate: \$200 - \$300



Lot #417: CHROMOLITHOGRAPH

Description: After B. Champney, depicting mountains and stream in foreground, dated 1877 by Prang & Co. Boston

30 inches high x 22 inches wide

Estimate: \$200 - \$300



**Lot #418: CHROMOLITHOGRAPH AFTER JAMES
MCDOUGAL HART**

Description: Depicting a girl by a stream in forest by Prang & Co., Boston: in a gilt frame

Frame 20 inches high x 30 1/2 inches wide

Estimate: \$200 - \$300



Lot #419: CHROMOLITHOGRAPH

Description: Depicting a ship wreck by Prang & Co: in a gilt frame

20 1/2 inches high x 30 1/2 inches wide

Estimate: \$100 - \$200



Lot #420: THREE CHROMOLITHOGRAPHS

Description: Two depicting pieces of furniture (matted), the third depicts a billiards room (framed). 20 inches x 23 1/2 inches (the largest)

From the Estate of Frederick W. Hughes

Estimate: \$125 - \$175

Lots 421 - 430



Lot #421: YALE CAMPUS ENGRAVING

Description: Initialed "RS in the image and signed in pencil in the margin "R M Sherman." 6 1/4 inches x 8 inches (image)

From the Estate of Frederick W. Hughes

Estimate: \$30 - \$50



Lot #422: SKULL & CROSSBONES SOCIETY BANNER

Description: The velvet panel with applied skull and cross bones 110 inches long x 33 inches wide

From The Estate of Frederick W. Hughes

Estimate: \$300 - \$500



Lot #423: "THE ORIENTAL GUIDE"

Description: Lithograph in color, copyright "James Warren Currier, 1874" and published by Armstrong & Co. Boston. 33 inches x 27 inches (framed)
From the Estate of Frederick W. Hughes
Estimate: \$300 - \$500



Lot #424: ODD FELLOWS POSTER

Description: Color lithograph of the symbolic designs from the Lodge of the Order of Odd Fellows, Nyack, NY; framed under glass. Provenance: Hirschl & Adler Galleries, Inc.
44 1/2 inches x 31 1/2 inches (framed)
From the Estate of Frederick W. Hughes
Estimate: \$500 - \$700



Lot #425: TWO FRAMED PRINTS DEPICTING BRITISH MILITARY FIGURES

Description: 17 inches high x 19 1/2 inches wide
From the Estate of Frederick W. Hughes
Estimate: \$50 - \$75



Lot #426: THREE TORTOISESHELL CARD CASES

Description: Comprising two Victorian with pewter diamond lattice, inlaid veneered cases and a chinese case relief-carved with figures.
lengths: 4 inches and 4 1/8 inches
From the Estate of Frederick W. Hughes
Estimate: \$125 - \$175



Lot #427: AUSTRIAN ART DECO ENAMELED METAL AND EBONIZED WOOD CIGARETTE DISPENSER.

Description: Impressed "M.I. Austria"; in the form of a bow-fronted bar with slide-concealed cigarette holder, backed by a black box tender and a chrome bottle-form dispenser.
6 1/8 inches x 5 3/4 inches x 4 inches
From the Estate of Frederick W. Hughes
Estimate: \$300 - \$400



Lot #428: TWO TABLE ARTICLES

Description: Comprising an 11 1/4 inch white painted tin bread box and a salt glazed stoneware 16 inch cylindrical crock and cover with molded handles.

Estimate: \$40 - \$80



Lot #429: GROUP OF EIGHT BRASS CABINET ARTICLES

Description: Comprising four match safes, in the form of a crab claw, a violin, a court jester and a deer hoof, respectively; a shoe-form snuff box; a lighter; and two traveling ink well holders.

Lengths from 1 5/8 inches to 4 inches

From the Estate of Frederick W. Hughes

Estimate: \$300 - \$400



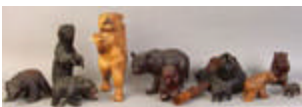
Lot #430: FRENCH BRONZE FIGURE OF A SOLDIER

Description: Impressed signature C. Amfrie, standing above a mortar shell; together with a gilt-bronze seated bear cub on rectangular marble base, a wood figure of a seated hound on white marble base and a brass railroad lock and chrome-plated key, impressed "72".

Height of soldier: 9 3/4 inches

Estimate: \$200 - \$300

Lots 431 - 440



Lot #431: GROUP OF GERMAN CARVED WOOD FIGURES OF BEARS

Description: In walnut and oak, including an 8 inch bear head, full figures of cubs and adult bears and a brush with a mother carrying a cub.

heights: 1 3/4 inches to 9 inches

Estimate: \$100 - \$150



Lot #432: GROUP OF THREE TABLE ARTICLES

Description: Comprising: a 7 1/2 inch Spanish Colonial painted and tin figure of an angel, a painted and parcel-gilt 11 1/2 x 6 inch small door panel incised with a chalice and host, and a revers painting on glass Islamic calligraphic 4 3/4 inch x 6 1/4 inch panel, in brass mounted frame.

From the Estate of Frederick W. Hughes

Estimate: \$100 - \$150



Lot #433: A COPPER-MOUNTED "TRENCH ART" BRASS BOX

Description: The front applied with central profile portrait flanked by bullet shells and Cuban and Mexican coins, some dated 1906, 1910 & 1915

4 3/4 inches high x 8 1/2 inches wide x 5 1/2 inches deep

From the Estate of Frederick W. Hughes

Estimate: \$80 - \$120



Lot #434: GROUP OF THREE BRASS STATIONERY CLIPS

Description: Comprising a Victorian lady's hand-form clip with Birmingham patent, a sphinx head clip and an owl clip; together with an elephant-form bottle opener and a lighter. Lengths 2 1/2 inches and 4 inches

From the Estate of Frederick W. Hughes

Estimate: \$80 - \$120



Lot #435: PAIR OF GOTHIC REVIVAL GILT-METAL STATIONARY HOLDERS ON WHITE MARBLE BASES

Description: Each in the form of a multi-tiered church facade, fronted by a pierced gate, rectangular base; together with a pair of brass boot form table articles.

Heights: 11 3/4 inches and 6 7/8 inches.

Widths: 6 inches and 7 1/2 inches

From the Estate of Frederick W. Hughes

Estimate: \$250 - \$350



Lot #436: GROUP OF THREE CABINET ARTICLES

Description: Comprising: a leather-mounted brass barrel-form travel inkwell with hinged lid repousse with a dolphin-entwined anchor; a treenware tower-form match holder with twist-on lid; and a French papier mache' pot lid painted with scene from Pandora.

From the Estate of Frederick W. Hughes

Estimate: \$150 - \$200



Lot #437: BRASS-HANDLED SILK COLLAPSIBLE FAN

Description: The brass telescopic handle with circular blue pleated panel boxed; together with a German chrome cigar cutter by Rostfrei, and a cigarette holder with case. Length of box, 7 inches

From the Estate of Frederick W. Hughes

Estimate: \$40 - \$60



Lot #438: GROUP OF BRASS TABLE ARTICLES

Description: Comprising an English hunting horn, by Acme, a candle snuffer, a carriage horn, a Victorian small tea kettle, a stationary holder with dolphin-form front, a chamber candlestick with conical snuffer, a 20 inch tray and a nest of two cushion-form boxes; together with a silver-plated large tankard, and an Italian six-part letter holder designed by Swid Powell.

From the Estate of Frederick W. Hughes

Estimate: \$200 - \$300



Lot #439: VICTORIAN BRASS-MOUNTED WALNUT BOAT FORM INK STAND

Description: With central glass well, lacking cover and fitted with bone-handled fountain pen and a pencil and a walnut pencil with boxer head; together with a spy glass with gold (375) ringed faux tortoiseshell and rosewood handle.

10 1/2 inches and 9 inches long

From the Estate of Frederick W. Hughes

Estimate: \$150 - \$250



Lot #440: GROUP OF THREE CABINET ARTICLES

Description: Comprising a bisque porcelain cane handle in the form of a lady's leg, a bone tatting needle in the form of a booted leg and a silver-plated shoe-form snuff box.

Lengths: 3 inches, 3 1/4 inches, and 6 inches

From the Estate of Frederick W. Hughes

Estimate: \$40 - \$60

Lots 441 - 450



Lot #441: FOUR FRAMED ARTICLES

Description: All matted and framed under glass.

Various sizes.

From the Estate of Frederick W. Hughes

Estimate: \$50 - \$75



Lot #441A: FOUR PHOTOGRAPHIC ILLUSTRATIONS

Description: 2 views each of 2 plaster busts, each signed indistinctly and matted and framed under glass.

19 7/8 inches x 17 1/2 inches (framed)

From the Estate of Frederick W. Hughes

Estimate: \$50 - \$75



Lot #442: SEVEN SEPIA BOOKPLATES

Description: Depicting estate buildings and interiors, all matted and framed under glass.

Various sizes.

From the Estate of Frederick W. Hughes

Estimate: \$75 - \$100



Lot #443: SEVEN SEPIA BOOKPLATE ILLUSTRATIONS

Description: Depicting interior and exterior views of estates. All matted and framed under glass in gilded frames.

Various sizes

From the Estate of Frederick W. Hughes

Estimate: \$75 - \$125



Lot #444: FOUR NEWSPAPER ILLUSTRATIONS

Description: New York City and/or Vanderbilt related; matted and framed under glass.

20 3/8 x 25 3/16 (the largest, framed)

From the Estate of Frederick W. Hughes

Estimate: \$60 - \$80

**THERE ARE NO MORE LOTS BEING OFFERED AT
THIS AUCTION**